



## Electricity Industry Bulletin No: 43 June 2001

### **ATTENTION COMPANY MANAGERS**

**Please ensure your nominated manager and electricians see this circular.**

### **1. PROSECUTION FOR UNLICENSED ELECTRICAL WORK**

On 7 May 2001, the first person to answer to a charge under the *Electricity Industry Safety and Administration Act 1997* of unlicensed electrical work in Tasmania appeared in the Hobart Magistrates Court.

Although the accused was caught red handed, he pleaded not guilty.

The accused was convicted after the Magistrate heard evidence from three witnesses, including Michael Searle an Aurora Energy inspections officer, and considered documents from Electricity Standards *and* Safety.

The accused, a police officer at the time of the offence, said before sentencing that he was doing electrical work for an aged relative who couldn't afford to pay.

On conviction, the accused was fined \$500 and court costs of \$35.

### **2. HIH INSURANCE IMPLICATIONS FOR ELECTRICAL CONTRACTORS**

With the failure of HIH insurance some electrical contractors may be left with no, or no effective, insurance coverage.

It is compulsory under regulation 8 of the Electricity Industry Safety and Administration Regulations 1999, for contractors to have a "current policy of insurance....insuring against liability for personal injury or property damage arising from a negligent act or omission in the course of business conducted under the licence (their electrical contractor's licence) for the period" of their licence.

In the absence of the required policy of insurance, an offence is committed with an individual's fine set at a maximum of \$10,000 and \$20,000 for a company.

If you have no insurance and a claim arises you are exposed to risk and possible ruin.

For those with insurance with HIH you should check your position and, to avoid risk, you might need to take out alternative coverage.

### **3. MEN CONNECTIONS**

Authorised electrical inspectors have encountered numerous situations where they have found the MEN link has not been connected to the main neutral link. This may be an oversight when the electrician has removed it for testing, however it is the electrician's responsibility to ensure it is reconnected once all testing has taken place.

There also seems to be some confusion about when a MEN can be used at a sub-board. Contractors circular No:31 has an excellent article on MEN Connections – "Where and how". It is suggested employers ensure all their electricians read and understand the article.

#### 4. INSTALLATION TESTING AUDIT

The installation testing module was first implemented by TAFE in 1995.

Since then approximately 780 technicians have received training in this area and now should be fully conversant with the method of testing an electrical installation.

AS/NZS 3000:2000 section 6 *Testing and Verification* sets out the requirement that: "all electrical installations and any alterations, additions or repairs to an existing electrical installation after completion and before being energised, shall be a) inspected as far as practicable and b) tested.

To gauge the effectiveness of this module against the practical application in the field, Electricity Standards and Safety is considering conducting audits on the method of testing an electrical installation by electricians. This will also provide feed back to the TAFE colleges for further reference.

It is envisaged that electrical contractors will be selected at random and arrangements made to visit an electrician on site for the electrical testing to be carried out.

Electricity Standards and Safety offers the opportunity for the electrician to ask questions and gain further knowledge on the methods and equipment used by electrical inspectors.

Feed back on this proposal is welcome and any comments should be forwarded to Tony Millhouse

#### 5. NEW STANDARD - AS/NZS 4836:2001

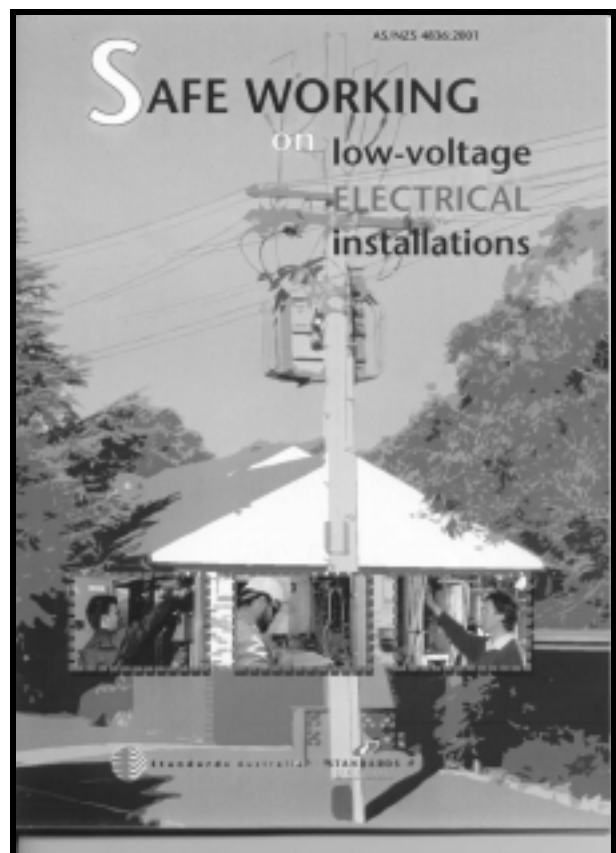
##### *Safe Working On Low-Voltage Electrical Installations*

This Standard outlines principles and procedures of safe work, organisation and performance on or near low-voltage electrical equipment. It provides a minimum set of procedures, safety requirements and recommendations for a safe working environment on or near electrical equipment, installations or systems.

This document is a must for all electrical contractor businesses to include in their safety management portfolio. We expect electrical contractors to adopt this standard to provide direction towards setting minimum safety criteria when working on low voltage electrical installations.

This standard will be used to measure compliance when investigating serious electrical accidents.

Contact Standards Australia now to order your copy (Hobart ☎6224 2380)



#### 6. SAFETY AND CARE OF TESTING INSTRUMENTS – DOES THIS INCLUDE YOU?

- Multi-meters with a piece of wire wedged under the fuse to disable its safety features!
- Instruments that explode because their interiors are filled with water!

These are just two examples of the misuse of testing instruments and, this sort of treatment leads to inaccurate readings based on what your instrument is telling you.

Most instrument manufacturers (based on research), are implementing added safety features to their equipment, HOWEVER the bottom line is still education and the establishment of proper operating procedures by the end user.

**Please take care of your testing instruments, understand their operating features and, implement a regular maintenance system.**

## **7. ELECTRICAL INSTALLATION NOTICES (EINS)**

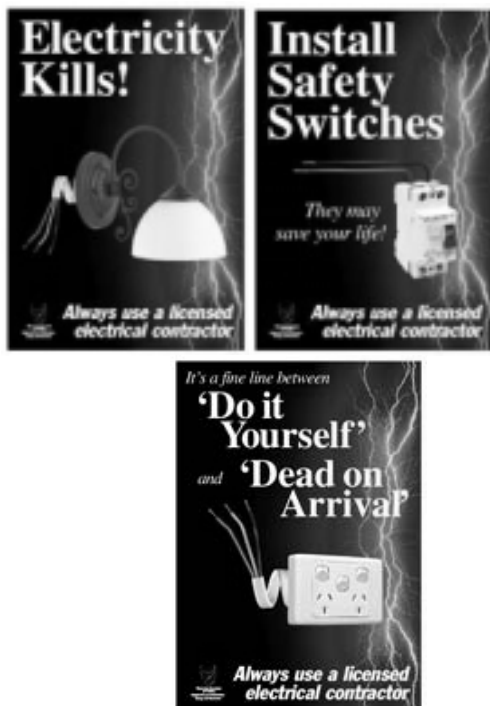
The original electrical installation notice must be sent to the electrical inspectors at Aurora Energy. **Faxed notices are not acceptable.** Do not expect to have electrical work notices accepted if the original is not sent.

Phone numbers for the inspectors have not changed, inspectors can still be contacted on the previous numbers for advice on wiring rules interpretations.

## **8. EDUCATION CAMPAIGN**

**Continuing the message – “Always use a licensed electrical contractor”**

There are three new posters (30cm x 42cm) in the campaign for contractors or other interested parties to display in workshops or customer contact points.



These are available by contacting the Helpline on **1300 366 322** or alternatively you can download the publications list and enter the number of publications required and mail or fax to Workplace Standards Tasmania. ([www.wsa.tas.gov.au/publications](http://www.wsa.tas.gov.au/publications))



Enclosed with this bulletin is a sticker for your vehicle from our “Always use a licensed electrical contractor” education campaign.

## **9. STANDARDS AUSTRALIA**

Committee EL/1, the Australian and New Zealand wiring rules committee, recently met to consider postal ballot results of Amendment one to AS/NZS 3000, revisions of AS 3001 Movable Premises, AS 3002 Shows and Carnivals, AS 3004 Marinas and Pleasure Craft, AS/NZS 3012 Construction and Demolition sites, AS/NZS 3017 Testing Guidelines, and AS/NZS 3018 Domestic Installations. It is expected that the revisions of these standards will be published later this year.

The committee also discussed a handbook/guide for use with AS/NZS 3000 that will contain deemed to comply solutions and reviewed a proposed list of clarifications to the wiring rules.

These issues are similar to the old “Rulings” issued on previous editions of the Wiring rules. The issues identified as requiring clarification include the following:

- Difference between the term “Emergency system” and “Essential service”.
- Information on suitable earthing conductor impedance.
- Examples of the difference between “Alterations”, “Additions” and “Repairs”.
- Guidance on the number of circuits required.
- Examples of omission of overload devices.

- Where joints in conductors may be made without an enclosure.
- Further explanation of “Arcing fault”.
- Further explanation of “Fault loop impedance”.
- Maximum demand for final subcircuits.
- Jointing and termination of aluminium cables.

As these are clarification issues of what will be called “Frequently Asked Questions (FAQs)” they will not lead to amendments to the Wiring rules but the Committee endorsed answers will be published on the Wiring Rules web page for easy access.



### **Touch Lamps**

Models KL 2100, KL 2101 & KL 2102 sold through Target stores since January 2000.

Use should be discontinued immediately and the product returned to the point of purchase. Further enquires 1300 553 335

### **Softee Dolphin Lamp**

(240V, 10W version)

This portable luminaire was sold through Chickenfeed stores from November 2000.

The lampshade is in the shape of a dolphin that fully encloses the lamp holder and sits on a metal coil base. All items to be returned to Chickenfeed stores  
Further enquiries contact Look Sharp Concepts Pty Ltd 02 9688 1900

## **10. AURORA AND ESS ALLIANCE AGREEMENT**

The signing of an alliance and service level agreement between Electricity Standards *and* Safety and Aurora Energy represents a crucial step in the development of the relationship between the two organisations.

The agreement demonstrates the commitment of both organisations to work together to improve the performance of electrical contractors, and the common ground of “bettering electrical safety within the State”.

The groundwork for the alliance was

established with workshops between management and the relevant divisions of both organisations. A work group of personnel from Electricity Standards *and* Safety and Aurora’s Standards and Compliance group was established and developed the agreement with a series of consultations and meetings.

A framework for cooperation between the two parties is achieved on two levels.

1. The Memorandum of Alliance established the way in which Electricity Standards *and* Safety, Aurora Energy and Aurora Services work together to promote and further electrical safety through joint effort and promote electrical installation standards to minimise public risk; and
2. The Service Level Agreement identifies the roles and responsibilities for electrical inspection staff and spells out specific functions and associated levels of performance.

The agreement formalises and strengthens an existing arrangement between Aurora and Electricity Standards *and* Safety that has operated since the safety regulatory requirements were moved from the then Hydro Electric Commission to Government some time ago.

In general electrical contractors will not see a great difference in the way things operate with the exception that at some stage, authorised Aurora staff will be conducting electrical contractor audits.



Back from left Murray James, Robert Stops, Peter Barrett, John Hammersley, Wim de Puit and Charles Woodhouse. Front John Arnold and Steve Hyam.