

Update - Natural Gas Rollout

Stage 2A of the Natural Gas distribution rollout has been completed. New construction and commissioning programs include:

- Bell Bay – Georgetown, where distribution mains laying has commenced
- East Devonport – Wesley Vale 1050kPa main.

Gasfitter Licensing

Developments of Occupational Licensing Regulations are progressing with a version planned for release to industry bodies by February 2008.

National uniformity of gas fitter licensing and qualification has commenced. New scopes of work are:

- Restricted gas fitting (electricians)
- Advanced Gas Fitting
- Specialised Gas Fitting (>200 kPa / >8 kl LPGas).

The new Type B (Restricted and Advanced) scope of work has been drafted in line with industry evolution.

LP Gas Licensing

LPG gasfitter licensing renewal and applications for new LP Gas licenses will continue to be processed by the Plumbers and Gas Fitters Registration Board from their new premises at 196 Campbell St Hobart or PO Box 526 Moonah 7009.

Electronic Accreditation, Installation Certification and Audit

Following a recent national meeting of plumbing regulators in Hobart, Workplace Standards Tasmania (WST) welcomed Phil Routham (CEO/Registrar NZ Plumbers and Gas Fitters Drainlayers Board) and Jeff Clarke (Plumbing Services Compliance Manager SA) to demonstrate their client service delivery models.

Their presentations included current practices adopted in their respective jurisdictions utilising electronic lodgement of license renewals, installation certification and audit management. WST plan to phase in electronic delivery capability with the new Occupational Licensing framework.

Presenting the licensing software is Phil Routham (centre) to Shayne LaCombre, General Manager, Plumbing Industry Commission (left) and Michael McGuinness, Manager – Plumbers and Drainers Board QLD (right).



Gas Standards and Safety website

A comprehensive new website devoted entirely to the Tasmanian gas industries technical standards and safety requirements is available at <http://www.wst.tas.gov.au/gas>

New publications

- Gas Act 2000 Annual Report of Activities 2006 – 07
- Acceptance of Consumer Piping Operating in Excess of 200 kPa.

Gas Distribution Mains and Services

Installation work completed by a gasfitter at a local hotel involved relocation of the distributor's meter set and service line which was operating at 500kPa.

This work was illegal and required the distributor to complete modifications to the service. Service connections are installed to the distributor's technical standards which differ from AS 5601.

Installation of the meter must be agreed to between the owner and the distributor.

Legislation

The Gas Amendment Bill 2007 has been prepared to standardise the licensing, technical and safety requirements for Isolated Distribution Networks (LPG and LNG).

The passage of this Bill is expected to be finalised during the March sitting of parliament.

Gas Appliances – Safety Certification Training (TAFE)

Development of gas appliance safety certification training is continuing through TAFE. Gasfitter's who successfully complete the course will be able to apply to the Director of Gas Safety for approval as a "Restricted External Authority" enabling them to safely assess and certify individual gas appliances.

The AGA August product certification directory is available from <http://www.aga.asn.au/product> directory.

The AGA scheme has been extended to include certification of Type tested Refurbished Products.

Gas Incidents

Workplace Standards Tasmania Gas Inspectors recently issued a Gas Supply Prohibition Notice where it was found that a person without a natural gas licence undertook the conversion of (restaurant) appliances from LPG to Natural Gas. The distributor / directors reporting process identified non-certified work undertaken. Investigations into this incident are continuing.

Coronial Findings

Caravan LP Gas regulator:

The results of a WST investigation were confirmed by a coroner's enquiry, finding that a person was asphyxiated as a result of LPG inhalation whilst living in a caravan.

A faulty pressure regulator was mounted under the caravan floor, directly under a 25mm hole in the floor, allowing escaping gas from the regulator to enter through the hole in the floor into the interior of the caravan, causing asphyxiation to the occupant.

Portable Gas Refrigerator:

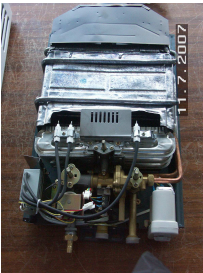
A fatality occurred in QLD to the occupant of a commodore station wagon parked at a roadside stop. It was confirmed by the QLD pathologist as carbon monoxide (CO) poisoning.

The source of the CO was a domestic 3-way, model F400 portable refrigerator in the rear of the wagon. It was supplied by a 9kg cylinder, also contained in the vehicle and was fully operational when found by police.

Gas Appliance Safety



The Director has been alerted to the importation and resale via the internet of an instantaneous water heater used particularly in the caravan and camping market. The water heater is available for both NG and LPG, is powered by 2 x "D" batteries and has electronic ignition and flame safe guard.



Connection is by a push on hose or fixed pipe with an input of 40MJ/hr. The appliance has no certification and is of serious safety concern. Please contact your WST office for advice if asked to install non-certified appliances.

Huanri YSF-RA-1 fitted to a Huanri LP Gas cylinder (aka Aussie Huanri LP Gas cylinder)

There have been investigations into three incidents a serious hot burns to body; the loss of domestic dwelling, valve separation and the released of gas which ignited damaging the appliance.

Component failure is caused when the torque applied to the spindle by an operator is sufficient to unwind the spindle from the valve body, allowing uncontrolled release of LPG to atmosphere, at cylinder pressure. The spindle assembly is not attached to the valve body at manufacture. This product has been withdrawn from markets by the importer.



Valve showing loose gland nut

ILVE Cook Top

Imported ILVE cooktop models H39, H391, H381, H360 have not been fitted with flame failure and are susceptible to flame extinguishment caused by vacuum pressure, often when mounted above a cupboard. Gasfitter's should advise consumers to contact the ILVE Eurolinx service department on (02) 8569 4600 for advice on how to rectify the problem.

LPG Storage - Public Event Safety

Taste of Tasmania patrons will enter a public environment where LP Gas storage safety has been managed on a risk model incorporating minor storage, temporary structures and adequate separation for the high density of occupants who will visit this popular event.

Taste of Tasmania management group, including Hobart City Council, Origin Energy and WST have worked to the parameters of the new draft of AS 1596 LP Gas storage in managing public risk at this event.

Gas Fitting Notices – General Information

A reminder to all gasfitters, prior to lodging a Gas Fitting Notice, please ensure all information requested has been provided and written in a legible manner. This includes correct spelling of consumer information and correct use of your licence (ie: if it is a natural gas installation, use your NG_ _ _ _ number not your LPG Installers Number).

A number of gasfitters are not completing this document as per the Gas (Safety) Regulations 2002.

Testing of Consumer Piping

When testing piping that has been added to an existing system, you must ensure that the new section is physically isolated by spading or similar method.

It is a dangerous practice to rely on an isolating valve to prevent the test medium (such as air or nitrogen) flowing into the existing system at higher than normal operating pressure. If the valves fail to hold, the higher test pressure could damage existing appliances, pipe joints or components. Existing piping should only be tested at operating pressure.

AS 5601 QUESTIONS AND ANSWERS

- Q. How far can I run a flue laterally?
A. Keep it as short as possible and do not exceed 50% of vertical height.
- Q. Is it OK to install a space heater or log fire in a fireplace where there is an electrical conduit pinned to the inside of the chimney?
A. No. The flue gas temperature will exceed the rating of normal household wiring (flue gas temperature could approach 300°C).
- Q. What is the test period for 25 meters of 20mm galv pipe?
A. Five minutes – up to 80 meters in this diameter) Clause (2.6.1) & Appendix E at table E1, clause E 3.2.2 (g).

Management and Staff at Workplace Standards Tasmania, Gas Standards and Safety wish to take this opportunity to wish everyone a Merry Christmas and a safe and prosperous New Year



We wish to advise that our offices will be closed from 12 noon Monday 24 December until 8.45am Wednesday 2 January 2008. For urgent assistance, the Helpline will be operating during this period on 1300 366 322.

Workplace Standards Tasmania - Gas Standards and Safety contact details:

In Tasmania 1300 366 322
Outside Tasmania (03) 6233 7657

Hobart 30 Gordons Hill Rd, PO Box 56
Rosny Park 7018

Launceston Henty House, 1 Civic Square
Launceston 7250

Burnie Reece House, 46 Mount St, PO Box 287,
Burnie 7320

Website www.wst.tas.gov.au/gas

Infrastructure Quality Assurance Officers are available at regional offices to assist you to interpret legislation and accept submissions.